

# 1<sup>st</sup>

# ANNUAL JOINT CONFERENCE

of the



**H**ELLENIC **A**SSOCIATION  
for the **S**TUDY of the  
**D**IABETIC **F**OOT

and

# MEET

MULTIDISCIPLINARY EUROPEAN  
ENDOASCULAR THERAPY



With the  
collaboration of:



Hellenic Cardiological Society (HCS)



Hellenic National Center for  
the Research, Prevention and  
Treatment of Diabetes Mellitus  
and its Complications (HNDC)

## 7-10 July 2011

AKS Hotel  
Porto Heli, Greece

Conference Secretariat:

 **free spirit**  
Getting you there!  
[www.free-spirit.gr](http://www.free-spirit.gr)

# A' Announcement

# Invitation



Dear Colleagues

It is with great pleasure that we invite you to join us to the 1<sup>st</sup> Annual Joint Meeting of the Hellenic Association for the Study of Diabetic Foot Diseases (EMEDIP) and the Multidisciplinary European Endovascular Therapy (MEET). The Meeting will be held in Porto Heli, Peloponnese, Greece, 7-10 July 2011.

This meeting is unique in the way it brings together specialists involved in the care of persons with diabetes, suffering from Diabetic Foot Diseases. This fact creates an environment in which all the aspects and hot topics in the abovementioned field will be presented and analyzed by the eminent speakers.

Since atherosclerotic peripheral vascular disease with the infection is a major factor in the pathology and progression of diabetic foot, special sessions will focus on the diagnosis and treatment of Foot Ischemia of both infected and non infected leg. Apart from the numerous plenary lectures, other review sessions and interactive workshops from renowned scientists have been integrated in the programme and will cover all of the other aspects, from the epidemiology and burden of diabetic foot related problems, to the treatment and rehabilitation.

The vivid exchange of knowledge of all the specialities involved and participating in this Meeting, introducing the concept of the multidisciplinary team approach to the diabetic foot care, will be further established by the discussion of the current status of clinical and basic research, presented orally or in the form of posters by the attendees.

We hope that we will have the opportunity to welcoming you at the excellent seaside resort of Porto-Heli, for the 1<sup>st</sup> Annual Joint Meeting of our Associations and enjoy with you an excellent scientific event.

For the Organizing Committee

**Chr. Manes**

**P. Bergeron**

**D. Raithel**

# General Information

## Official Language

**Greek & English** are the official languages of the conference, with simultaneous translation.

## Registration Fees

Until 31<sup>st</sup> May 2011

200 €

From 1<sup>st</sup> June and on site

250 €

## Deadline for the submission of Free Papers

April 20, 2011

## Travel Packages

### a) Participants: € 890,00

#### **The cost of the package includes:**

- Transfer from Athens to Porto Heli (schedules T.B.A.)
- 3 night stay + breakfast
- Coffee breaks (5)
- Welcome reception (Thursday, July 7<sup>th</sup>)
- Gala dinner (Saturday, July 9<sup>th</sup>)

#### **The package does not include:**

- Airfare
- VAT
- Registration fees

### b) Accompanying members:

- 3 night stay + breakfast: FREE
- Welcome reception (Thursday, July 7<sup>th</sup>): FREE
- Gala dinner (Saturday, July 9<sup>th</sup>): € 70,00 (includes transfer to Spetses island)
- Optional tours (as described in the "Social Program" section)

## Social Program

### Optional tours:

#### **Epidaurus - Mycenae - Nafplio**

##### Epidaurus



The Ancient Theatre of Epidaurus (4<sup>th</sup> century B.C.) is one of the most important archaeological sites in Greece. Located in a mystical setting in a forest, the ancient amphitheatre with its perfect acoustics captivates the visitor. Architecturally, the theatre was positioned in a way so that the sound would be clearly heard even in the last row of seats.

The modern, summer festival of Epidaurus first began in 1954. Since then, it has become the foremost institution of ancient drama, with the tragedies of Sophocles, Aeschylus, and Euripides performed at the ancient theatre by distinguished theatre companies.

##### Mycenae



The centre of Mycenaean civilization is characterised by its fortification walls. According to tradition, only the Cyclopes, with their super human strength, could have lifted the large, heavy stones to construct the walls. Thus, the name Cyclopean walls. Entrance to the Citadel is through the Lion's Gate, named by the relief carved on the slab of stone. Of particular interest are the domed tombs of the kings, highlighted by the impressive tomb of King Agamemnon, with its exquisite, gold, royal treasures.

## Nafplio



Nafplio is an important seaport on the Gulf of Argolis, Nafplio is a charming town dominated by the Palamidi rock. Beautiful neoclassical buildings, historic squares, Venetian balconies, old churches and Turkish mosques, are all a part of the colourful tapestry of the town. The church of St. George, adorned by replicas of great Italian painters and the Folk and War museums are places of interest.

**Cost: € 110,00 / person, (09:00-19:00h)**

### The tour includes:

• Transfer • Entrance fees to the museums • Tours with licensed guide • Lunch • Drinks

## Spetses - Hydra

### Spetses (4 nautical miles) - Hydra (8 nautical miles)



These islands are distinguished in modern, Greek history for their brave revolutionaries who played a major role in the Greek Revolution. On Spetses, visit the Bouboulina Museum, the stately home of a noble woman who was a famed revolutionary and, on Hydra, the stately homes of the freedom fighters Miaoulis and Koundouriotis.



**Cost: € 65,00 / person, (09:00-19:00h)**

### The one day cruise includes:

• Transfer • Entrance fees to the museums • Guided tour of the islands

## Hotel Information

### AKS PORTO HELI \*\*\*\*



Porto Heli, 21061, Argolis, Peloponnese

Tel.: +30 27540 - 98073

Fax: +30 27540 - 53 410

<http://www.akshotels.com/en/porto-heli-hotel.html>

Lovely grounds and a rich carpet of greenery beckon the guest to experience the sensations of beautiful Porto Heli

Bay. The hotel's luxuriously, spacious interior, surrounded by glass, invites the light and colours of the landscaped garden. Private corners, an open bar and delightful restaurants offer moments of pure pleasure. Minimalist décor, highlighted by a Greek motif, reflects the region's ancient cultural tradition. Elegantly-designed and well-appointed guestrooms provide a panoramic view to a spectacular seascape. The AKS Porto Heli, a 4-star hotel open year-round, offers 204 rooms and 10 suites.

## Contact Information

### Conference Secretariat



12 Thessalonikis Street, GR 15344 Gerakas, Attiki, Greece

Tel.: +30 210 6048260, Fax: +30 210 6047457

E-mail: [info@free-spirit.gr](mailto:info@free-spirit.gr), Web site: [www.free-spirit.gr](http://www.free-spirit.gr)

**Project Manager: Faye Sakka**

E-mail: [fsakka@free-spirit.gr](mailto:fsakka@free-spirit.gr)

## Organizing Committee

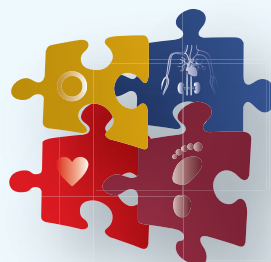
<b>CHAIR:</b>	C. MANES
<b>CO-CHAIRS:</b>	P. BERGERON D. RAITHEL
<b>MEMBERS:</b>	K. KALLIGIANNI A. KAMARATOS T. KATSAROS T. MESIMERIS A. PAPPAS N. TENTOLOURIS

## Scientific Committee

M. AMOR	D. KISKINIS
V. ANDRIKOPOULOS	A. KOKKINOS
I. APOSTOLAKIS	K. KTENIDIS
P. BALLAS	C. LIAPIS
A. BOULTON	S. LIATTIS
E. DEMIRI	K. MAKRILAKIS
E. DIAKOUMOPOULOU	K. MATHIAS
A. DIAMANTOPOULOS	G. PARHARIDIS
A. DIONYSOPOULOS	D. PERREA
L. INGLESE	S.A. RAPTIS
S. KALLIAFAS	N. SARATZIS
N.L. KATSILAMBROS	

## Topics

- Epidemiology and burden of the Diabetic Foot
- Pathogenesis of Diabetic Foot
- Clinical examination of the diabetic Foot
- Diabetic neuropathy
- Clinical features of vascular disease
- Imaging of the Diabetic Foot
- Revascularization
- Endovascular therapy
- Interventional Radiology
- Hemorrhology
- Cardiovascular Risk in Ulcerated Diabetic Foot
- Diabetic Foot infections-Osteomyelitis
- Evolution of wound healing
- Local Care of Diabetic Foot Ulcers
- Surgical Treatment in Ulcerated Foot
- Role of Growth Factors
- Living Skin Equivalents
- Alternative Treatments
- Charcot Arthropathy
- Offloading Techniques
- Amputations
- Chronic Kidney Disease and Diabetic Foot lesions
- Hyperbaric Oxygen Therapy
- Identification of at risk patient
- Multidisciplinary Diabetic Foot Clinic
- Rehabilitation of Prevention Strategies





Για περισσότερες πληροφορίες συμβουλευτείτε τις οδηγίες  
χρήσεως του προϊόντος

 Bristol-Myers Squibb

Bristol-Myers Squibb A.E.  
Αττικής 49-53 & Προπονίδος 2, Τ.Κ. 152 35 Βριλήσσια, Αττική  
ΤΘ 63883 - Βριλήσσια Τ.Κ. 152 03, Αττική  
Τηλ.: 210 6074300 & 210 6074400, Φαξ: 210 6074333  
ΑΡ.Μ.Α.Ε. 62772/01ΑΤ/Β/07/148

 **Iscover**<sup>®</sup>  
Clopidogrel 75mg / 300mg